



# **Adult Autism Waiver**

**5-Year Renewal**

**Effective July 1, 2026**

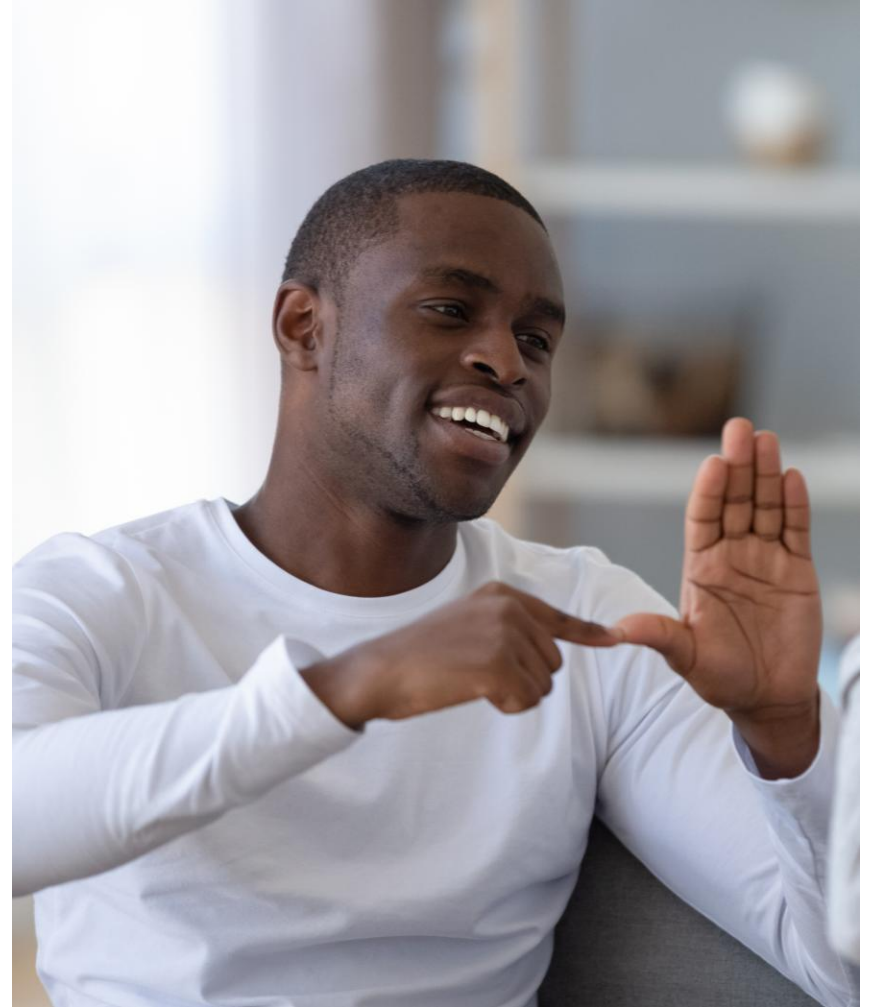
**Proposed Waiver Changes**



# American Sign Language-English Interpreter

Changes clarify that the American Sign Language-English Interpreter service:

- May be provided during temporary travel
- Must be billed using 15-minute units
- Providers must be registered with Pennsylvania's Office of Deaf and Hard of Hearing



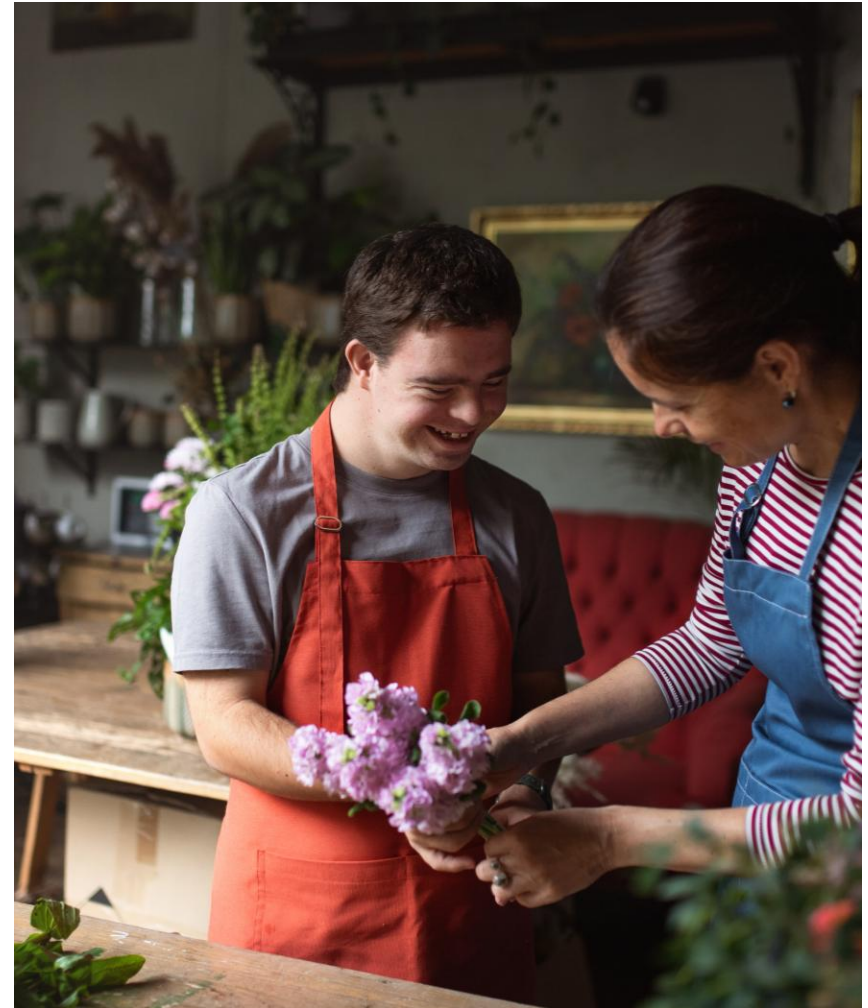
# Assistive Technology



- Changing the \$10,000 lifetime limit on Assistive Technology to a \$3,000 annual limit, per participant's plan year.
- The exceptions process can continue to be used for individuals who may need more than \$3,000 of Assistive Technology in a year.
- Generators will continue to have a lifetime limit of \$5,000 with no exceptions (this limit is not included in the \$3,000 annual limit).

# Employment Services

- ODP continues to encourage individuals to pursue competitive integrated employment.
- Changes were made to both the Career Planning and Supported Employment services to provide greater flexibility and access to these services.



# Career Planning

- The reauthorization requirements for both the Vocational Assessment and Job Finding components of the service were extended from 90 days to 6 months.
- Clarification was added for allowable Job Finding activities.



# Supported Employment



Intensive Job Coaching and Extended Employment Support components were removed from the service definition, including the different procedure codes.

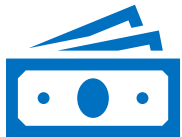
All Supported Employment activities will continue to be covered under one procedure code.

The requirement to reauthorize the Supported Employment service every 6 months was also removed to allow for greater flexibility and reduce administrative burden.

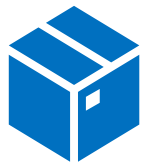
# Home Modification



Expanded the list of allowable home modifications available through the service.



Increased the base cost for home modifications that require 3 bids from \$1,000 to \$2,500.



Added clarification to allow individuals transitioning from an institution to a private home, including a Life Sharing home, to receive home modifications no more than 180 days before the individual moves to the private home.

# Residential Habilitation

Currently in the AAW, Residential Habilitation: Community Home and Life Sharing are under one service definition.

ODP proposes separating these services into 2 distinct services.

This separation will allow for better clarification as to the differences between the 2 services and is intended to encourage greater use of the Life Sharing service.



# Specialized Skill Development

The Specialized Skill Development service is intended to reduce the need for direct personal assistance by improving an individual's capacity to perform tasks independently.

Updates were made to further clarify and expand the purpose, expectations, and team responsibilities of each SSD service component:

- Behavioral Specialist Service (BSS)
- Systematic Skill Building (SSB)
- Community Support (CS)

# Respite

Proposed changes to the Respite service include:

- Listed allowable settings where Respite may be provided.
- Added language to reflect when and where respite may be provided during emergency situations.
- Clarified which services may not be provided at the same time as Respite.

# New Respite Provider Qualifications

ODP is also proposing adding the following requirements for Respite providers:

- Providers newly enrolling to render Respite must provide ODP home and community-based services to a minimum of 1 participant in the first fiscal year after enrollment.
- Starting 7/1/2027, currently enrolled Respite providers must render ODP home and community-based services to a minimum of 1 participant each fiscal year.
- The provider must also render ODP home and community-based services each quarter.

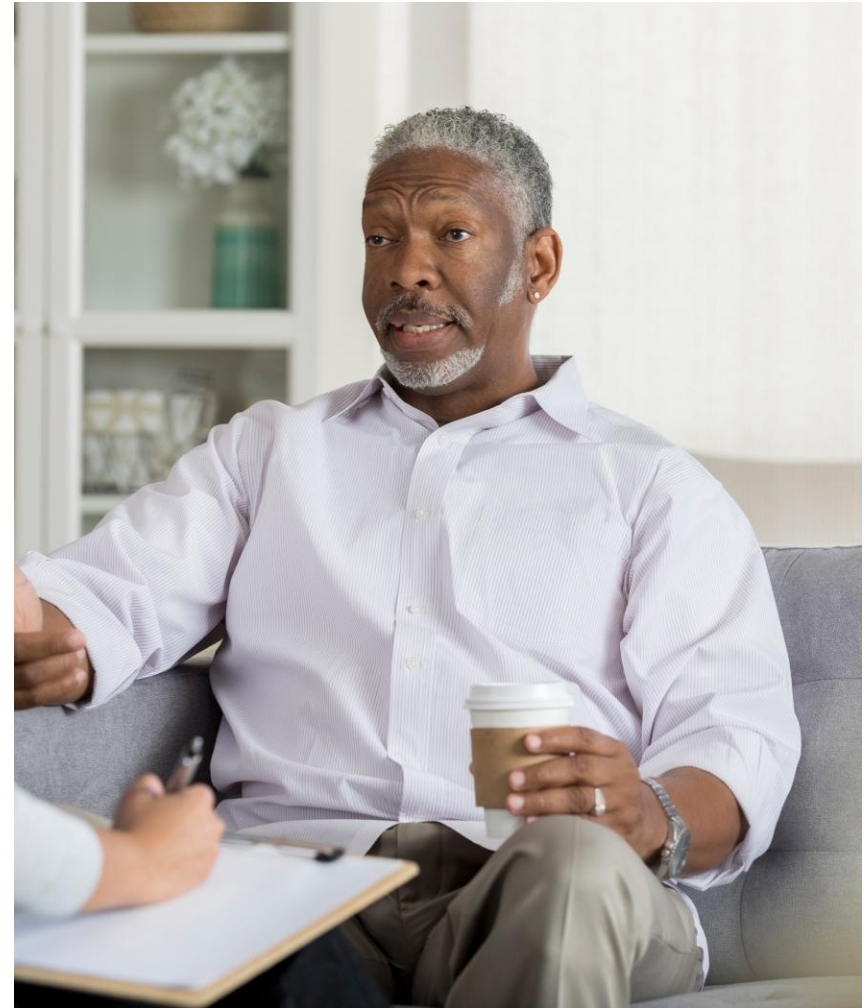
# Supports Coordination



- Service definition language was updated to clarify Supports Coordinators' responsibilities include use of the LifeCourse Framework.
- New qualifications were added for Support Coordinator Supervisors.

# Therapy

- The Speech/Language component of this service is being removed due to lack of utilization.
- Speech/Language therapy services are still available to participants via the State Plan.
- The Counseling component of the service was updated to provide clarification and guidance on what is allowable and service components that are available.



# Vehicle Modification



- Removed the need for an independent evaluation to increase the accessibility of the service.
- Service limit language was updated to allow for greater flexibility to cover the cost of the modification.
- Current service limit language: \$10,000 per participant over a 5-year period.
- Proposed new service limit language: \$20,000 per participant over a 10-year period.

# Additional Changes (1 of 2)

- **Day Habilitation**

- The Day Habilitation service may not include building interest in, and developing skills, potential and competencies necessary to pursue competitive integrated employment.
- Day Habilitation may not be provided to a participant during the same hours that Career Planning (Job Finding or Vocational Assessment), Nutritional Consultation, Remote Supports, Small Group Employment, quarter hourly-reimbursed Respite, Specialized Skill Development/Community Support, Supported Employment (when provided directly to the participant), Therapy, or Transportation is provided.

- **Family Support**

- Clarification was added to the service definition around counseling and psychoeducation family members may receive.

## Additional Changes (2 of 2)

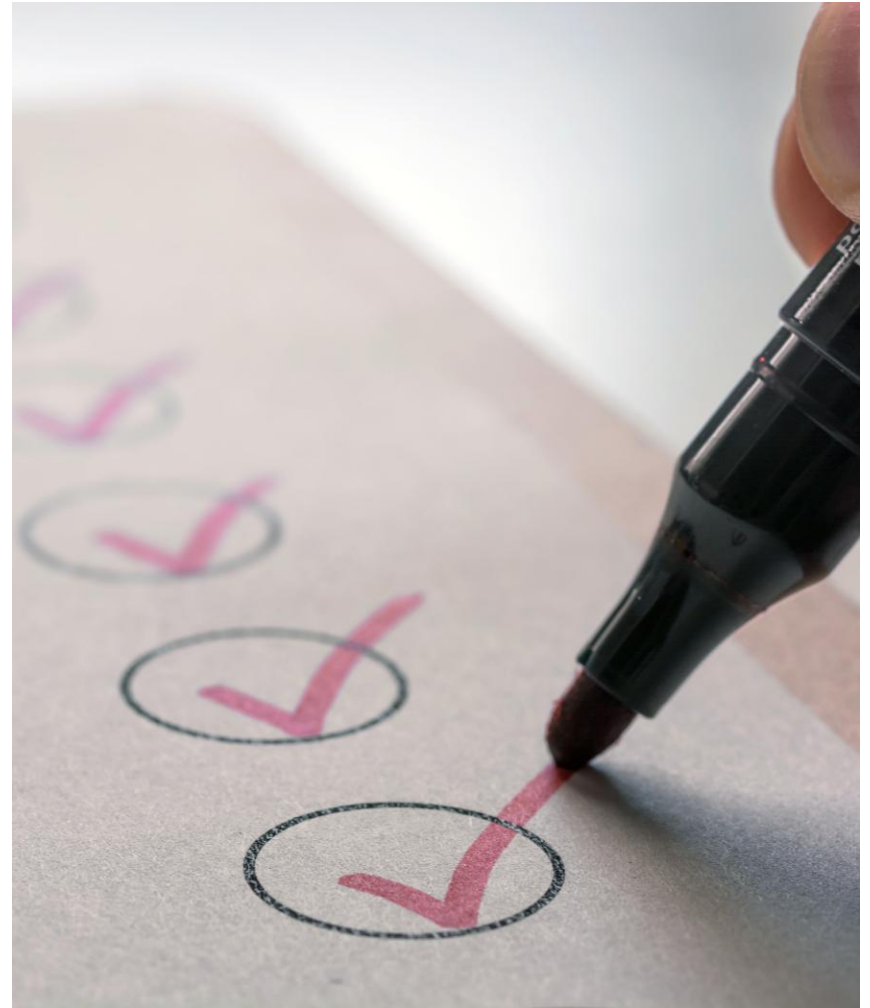
- **Remote Supports**
  - Clarification was added that Remote Supports service can be provided during temporary travel.
- **Temporary Supplemental Services (TSS)**
  - Outlines eligible providers who can enroll to provide the TSS service.
  - These include AAW enrolled providers for Residential Habilitation, Life Sharing, Day Habilitation, and Specialized Skill Development.
- **Removed and modified outdated language throughout the waiver.**

# Performance Measures

- Removed 2 Performance Measures because they are not included as part of ODP's current Quality Improvement Strategy.
- Added and updated required remediation plans to several Performance Measures.

## Next Steps

- Public Comments closed 2/16/2026 at 11:59 p.m.
- We are currently in the process of reviewing public comments.
- Submission of the proposed waiver to the Centers for Medicare and Medicaid Services is required by April 2026.
- The effective date of the AAW will be 7/1/2026.



# Resources

- The current version of the Adult Autism Waiver may be accessed at the [DHS Adult Autism Waiver landing page](https://www.pa.gov/agencies/dhs/resources/intellectual-disabilities-autism/autism-services/adult-autism-waiver):
  - <https://www.pa.gov/agencies/dhs/resources/intellectual-disabilities-autism/autism-services/adult-autism-waiver>
- The proposed version of the Adult Autism Waiver, with all changes discussed today, may be found at the [DHS Waiver Amendment landing page](https://www.pa.gov/agencies/dhs/resources/medicaid/waivers/proposed-waiver-amendments).
  - <https://www.pa.gov/agencies/dhs/resources/medicaid/waivers/proposed-waiver-amendments>