

ISAC Recommendation #4 – Support Families Throughout the LifeSpan

4/18/2023



What is a Community of Practice?

A group of people with a common interest

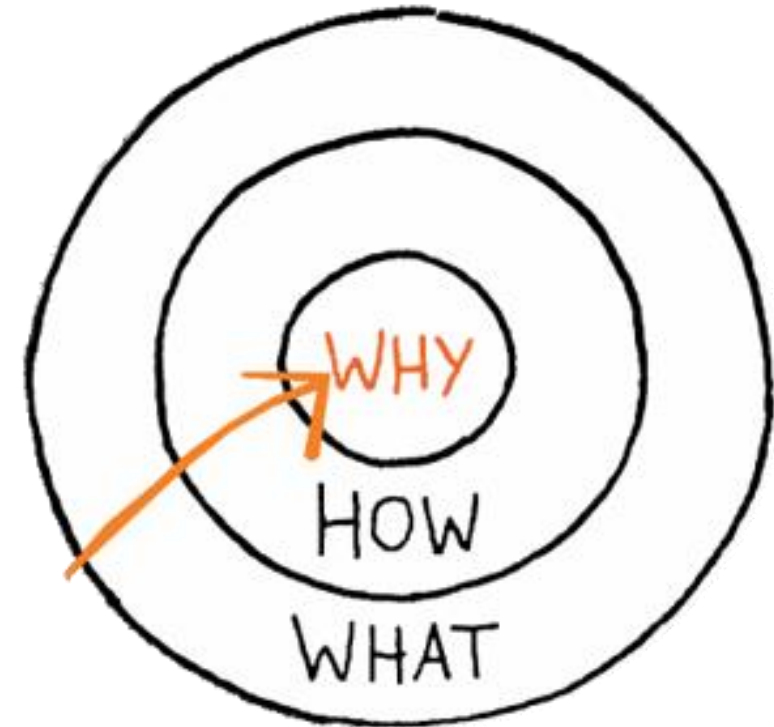
A group of people with a common goal of improving

A group of people who share experiences



Domain ● Community ● Practice

The overall goal of supporting families, with all of their complexity, strengths and unique abilities is so they can best support, nurture, love and facilitate opportunities for the achievement of self-determination, interdependence, productivity, integration, and inclusion in all facets of community life for their family members.



[About the NCoP – The Community of Practice for Support Families of Individuals with Intellectual & Developmental Disabilities \(supportstofamilies.org\)](http://supportstofamilies.org)

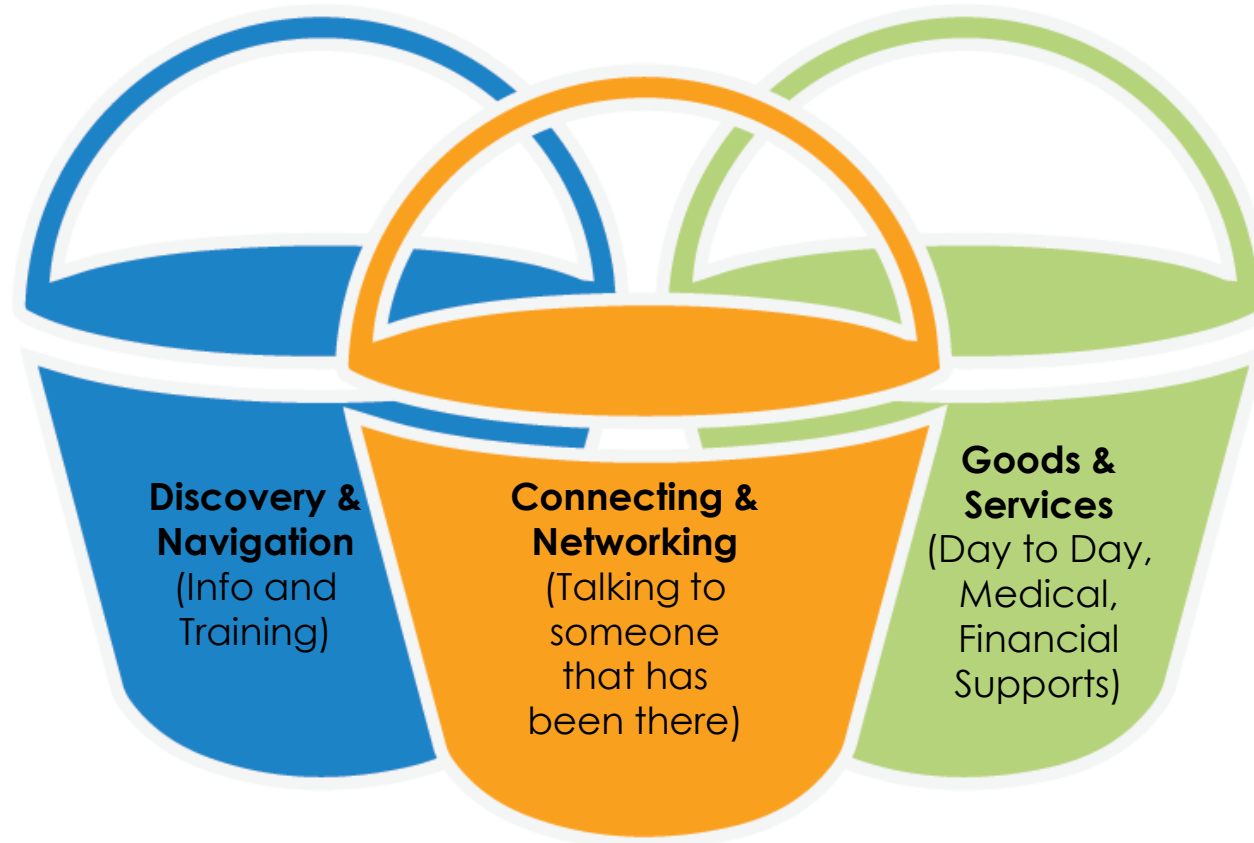


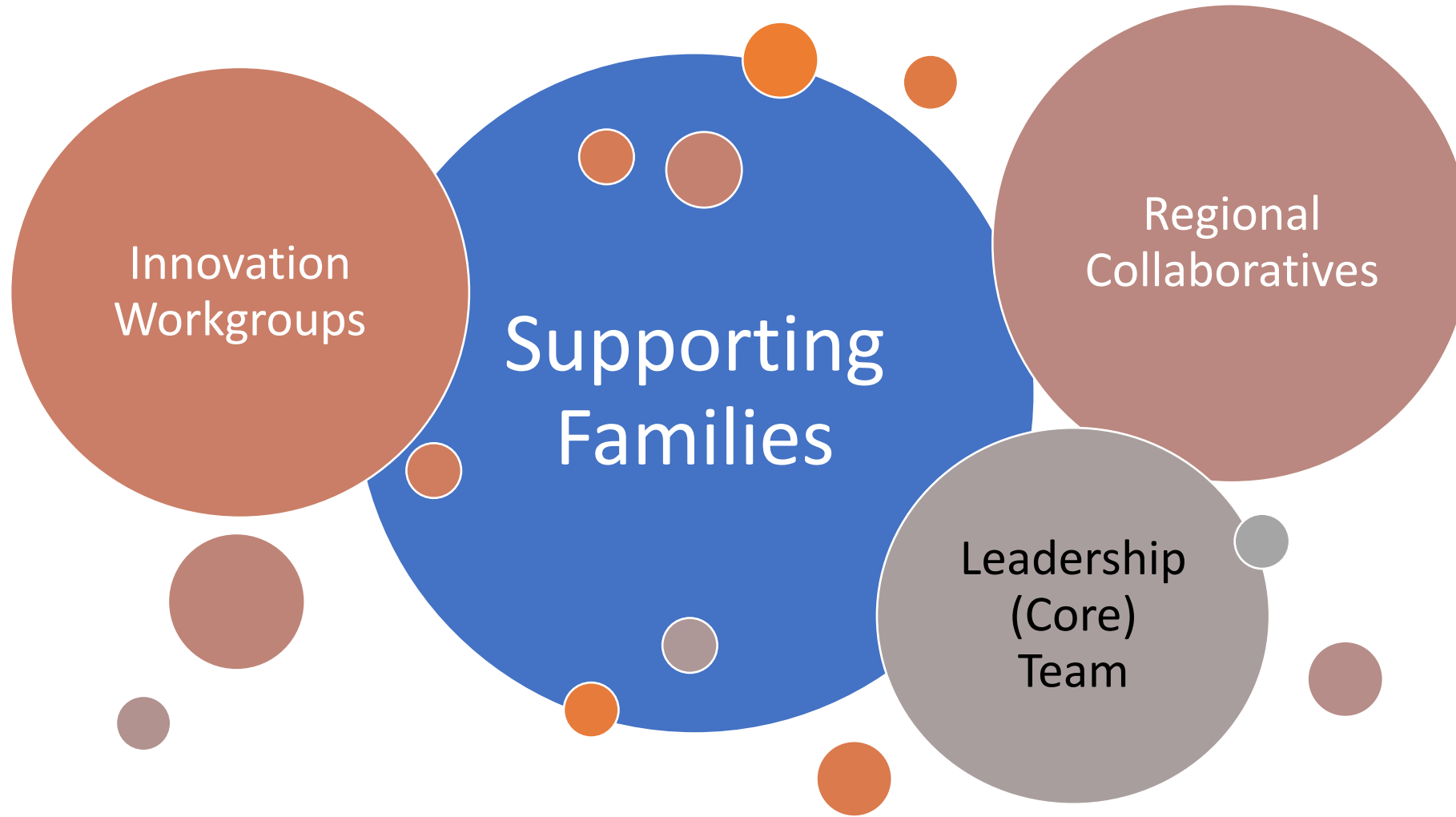
We use Charting the LifeCourse to Influence, Innovate, and Transform: Policy, Practice, and Culture

WHAT: Filling Buckets!



pennsylvania
DEPARTMENT OF HUMAN SERVICES







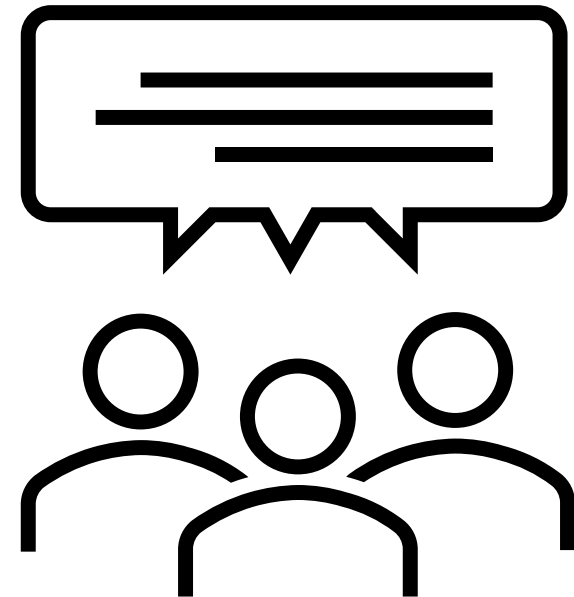
The FLOW of PA's CoP for Supporting Families



COMMUNITY OF PRACTICE FOR SUPPORTING FAMILIES PENNSYLVANIA STATE TEAM



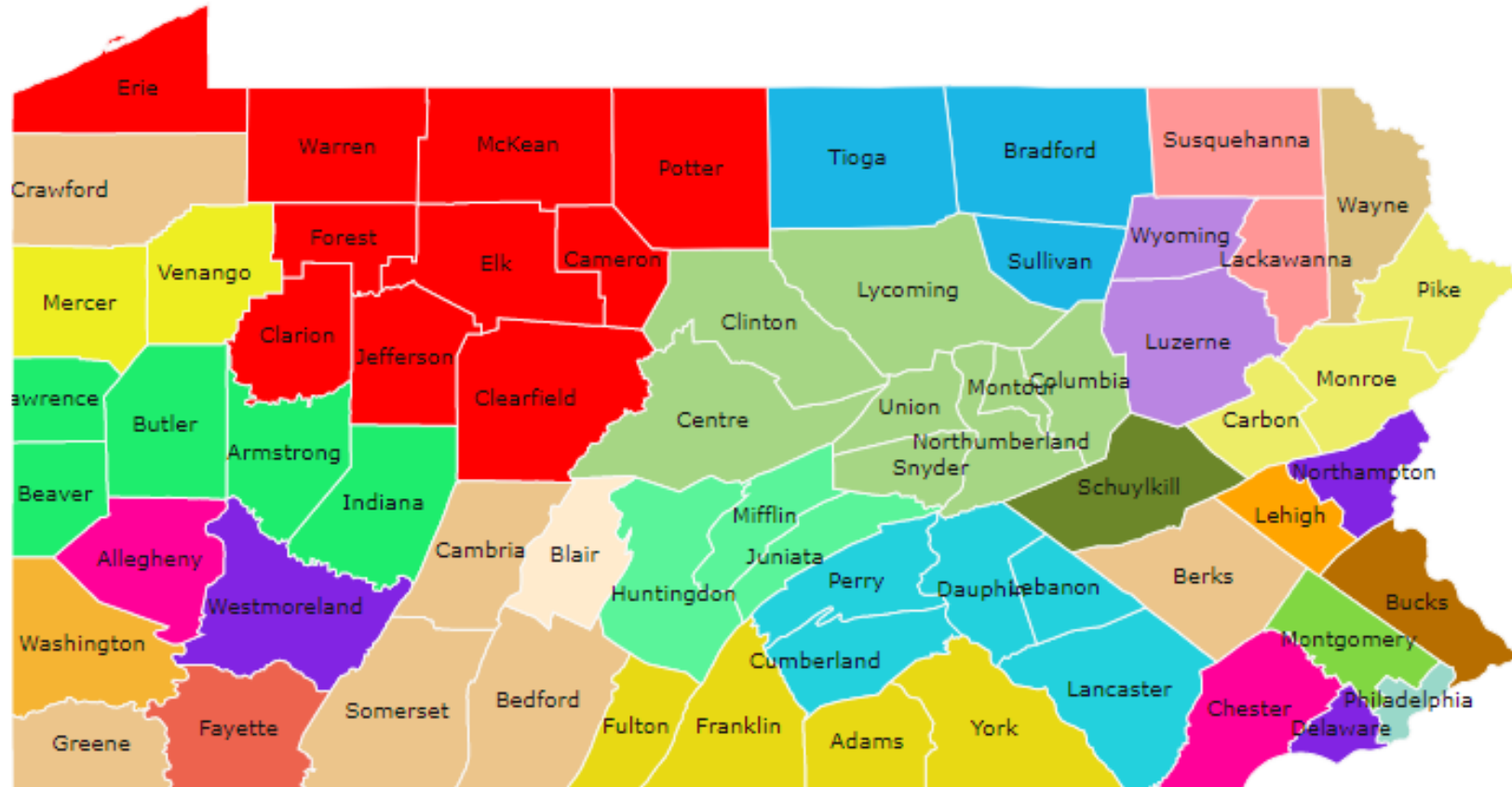
- Employment Innovation
- Family & Self Advocate Engagement
- Front Door
- Supports Coordination





Click on the County below to get involved.

All counties in Pennsylvania participate in the Supporting Families Initiative



2nd Annual PA Charting the LifeCourse (CtLC) Ambassador & Champion Event

November 16, 2022
1-3 pm

Office of Developmental Programs

PA Supporting Families Innovation Spotlight:

Supporting the person and the family toward Competitive Integrated Employment – PA InVEST

March 8, 2023 1-2:30 pm

Candida Walton, ODP

Dana Barone, OVR

Francine Hogan, PA Family Network



Community of Practice for Supporting Families Regional Collaborative Summit

August 14 and August 15, 2023 – In-person and virtual options

State College, PA

The Community of Practice for Supporting Families Regional Collaborative Summit will be held live in State College. Virtual participation options will also be available. Join the Summit this August to learn from peers and professionals about how to bolster your communities of practice for supporting individuals with disabilities and/or autism (ID/A) and their families.

Registration information to follow.

Charting the LifeCourse Ambassador Conversations

**The way to get started
is to quit talking and
begin doing.**

Walt Disney



■ Our current ambassadors are also
Family,
intellectual disability/autism (ID/A) providers of service and
ID/A administrative entity staff.

■ We've added an ambassador each month for the last three

■ There is never a lull in the dialogue

■ So many connections made, and ideas shared



*Are you an ambassador (or champion) that would like to learn more or join us?
Reach out to me via email or the QR code provided.*

Mary Evrard mevrard@allegHENYcounty.us

Allegheny County Department of Human Services (AC DHS)

Office of Developmental Supports (AC DHS ODS)



- What are we doing well?
- Do we have the structures and people in place that we need?
- What have we missed?
- What are your concerns?
- Are you aware of any resources, contacts, or networks that we should consider as we nurture PA's CoP for Supporting Families?

- Individual and family [survey](#)
- Dissemination strategies to increase the total number of family members who know about and then complete the survey.



How can you help distribute the survey?



Photo by Andrea Piacquadio: <https://www.pexels.com/photo/cheerful-senior-mother-and-adult-daughter-using-smartphone-together-3791664/>

Stay Tuned In

Subscribe to ODP's
Supporting Families
ListServ

[HERE](#)

