

# Sexual Violence, Harassment and Exploitation Against People with Disabilities – ODP's Call to Action

Institute on Disabilities, Temple University  
Celia S. Feinstein, Beverly Frantz & Julia Barol

June 14, 2018  
ISAC Meeting  
Harrisburg, PA



---

## VISION

A society where all people are valued and respected, and where all people have the knowledge, opportunity and power to improve their lives and the lives of others.

---

## MISSION

The Institute on Disabilities at Temple University learns from and works with people with disabilities and their families in diverse communities across Pennsylvania to create and share knowledge, change systems, and promote self-determined lives so that disability is recognized as a natural part of the human experience.



# APSE Mission and Vision

## **Vision**

All people with disabilities have competitive employment in an inclusive workforce.

## **Mission**

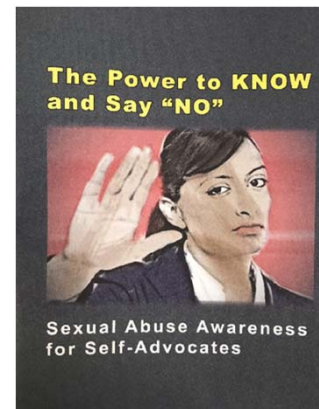
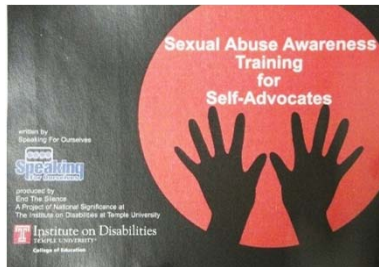
To advance employment equity for people with disabilities.

## **Values**

We believe that everyone can and should work, and have the dignity of determining their career path.

# Webinar

S

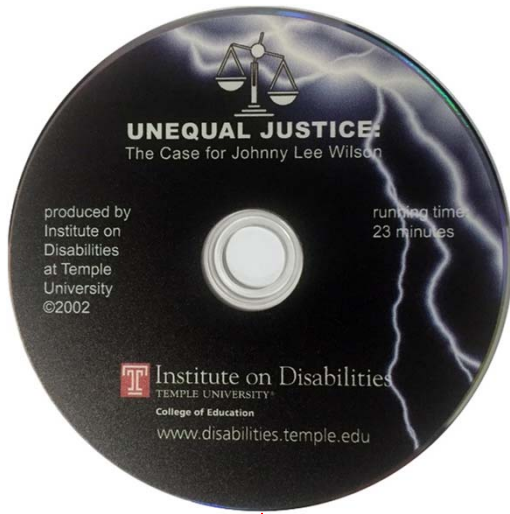


Communicating with Victims and Suspects: Significant Speech Disabilities

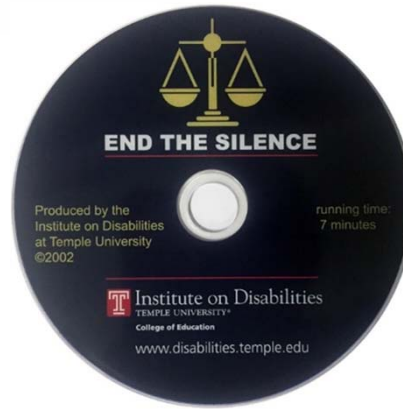
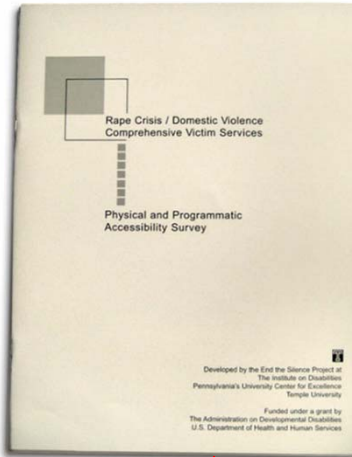


Communicating with Victims and Suspects: Significant Speech Disabilities  
221 views



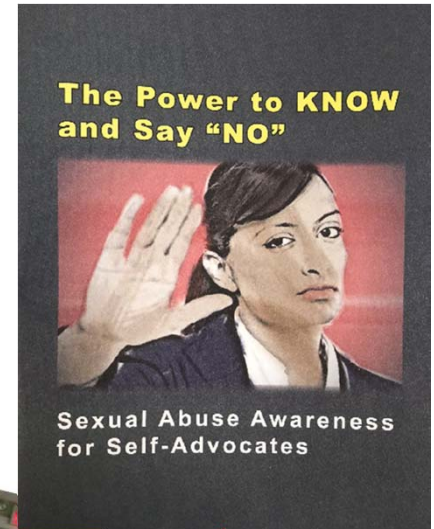
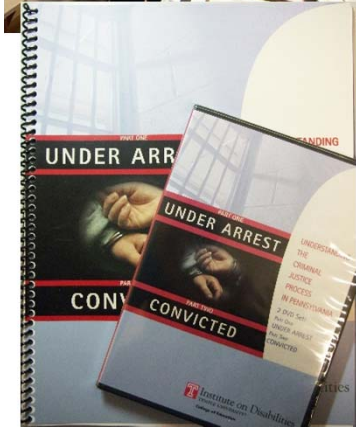


1996



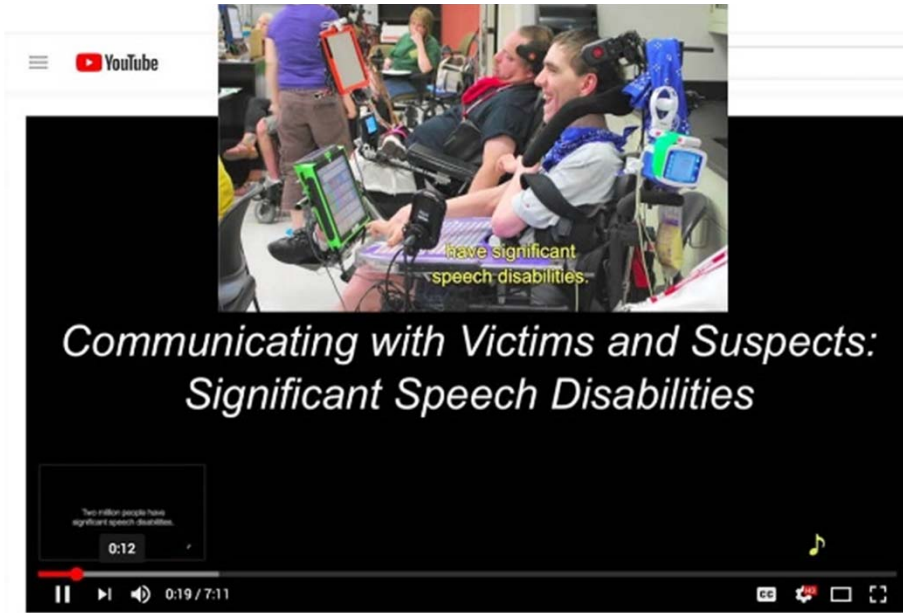
2002





2011

2014



Communicating with Victims and Suspects: Significant Speech Disabilities

221 views

LIKE DISLIKE SHARE

2015



2018

# Webinar

Course on Sexual  
Violence for CDS/CES  
and  
Course on healthy  
sexuality for CDS/CES

# What will the Institute on Disabilities and APSE Commit to do?

- College of Direct Support and College of Employment Services
  - Develop course on Sexual Violence for CDS/CES (through Direct Course and UMN)
  - Develop course on Healthy Sexuality for CDS/CES (through Direct Course and UMN)
- Health Education and Relationships Through Theater (HEART)
  - work with PHMC and TU Department of Special Education to develop a theater-based program for teaching relationships and sexuality skills to youth with ID and ASD ages 14-19
- Modify Curriculum for Self Advocates – Faces of Abuse
- Sexuality Committee - Safer Options
- Training for Investigators on Interviewing People with Disabilities
- IOD and APSE develop a series of short courses in MYODP for staff
- IOD and APSE will reach out to SHRM (Society of Human Resource Managers) to collaborate on existing trainings



---

Institute on Disabilities at Temple University  
1755 N 13<sup>th</sup> Street  
Student Center, Room 411S  
Philadelphia, PA 19122

Tel: 215-204-1356 Fax: 215-204-6336

Email: [IOD@temple.edu](mailto:IOD@temple.edu)

Web: [www.disabilities.temple.edu](http://www.disabilities.temple.edu)

Julia is there too!

