

**ISAC Recommendation #11 –  
Increase Community Participation  
Strategies and Performance Measures  
8/13/2019**





## **Recommendation 11: Increase Community Participation**

Being involved in community life creates opportunities for new experiences and interests, the potential to develop friendships, and the ability to make a contribution to the community. An inter-dependent life, where people with and without disabilities are connected, enriches all of our lives.

As of August 1, 2019:

- **28,334** users have received a certificate for Required Training
- **2,697** users have received a certificate for Professional Development



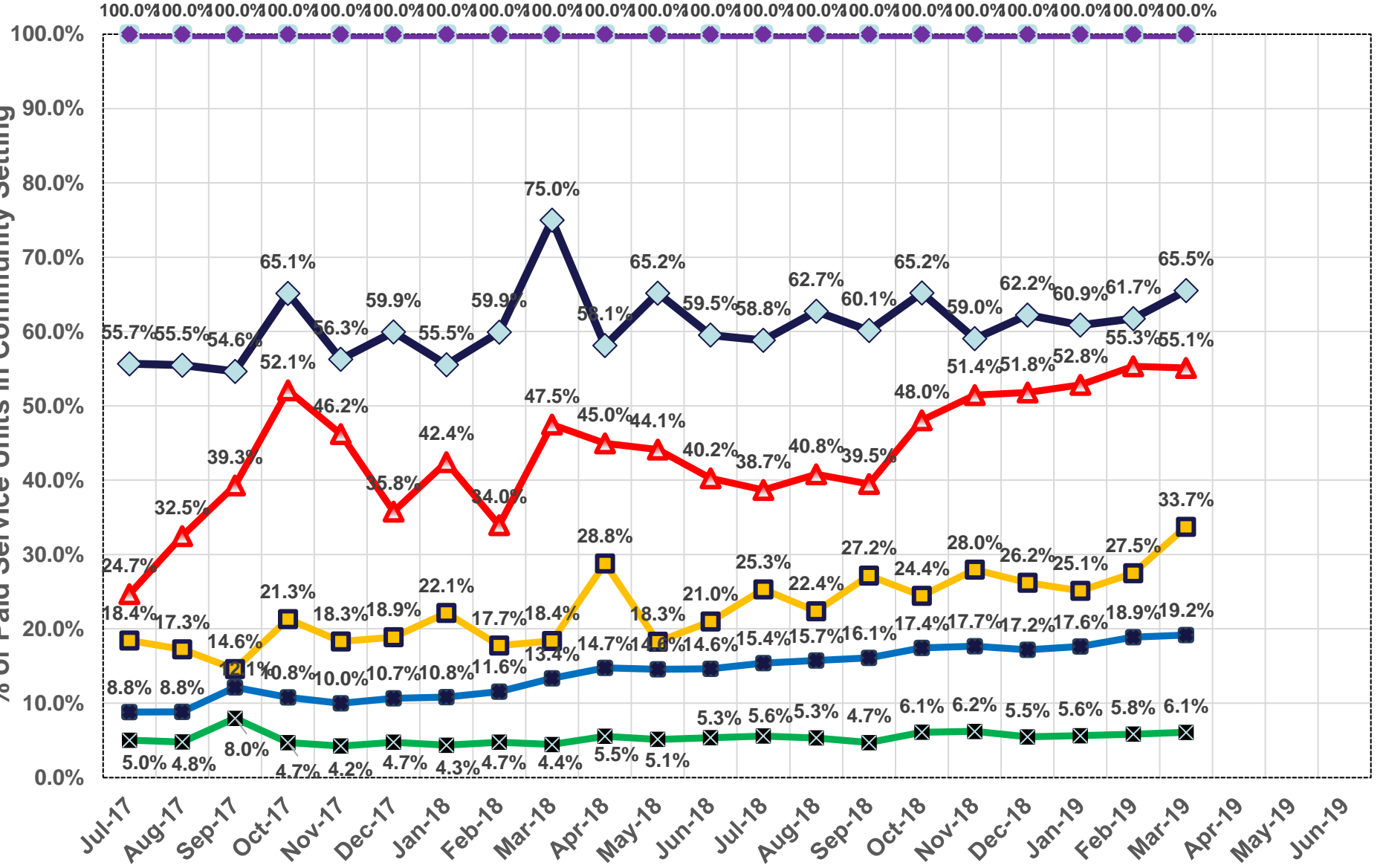
### ***Choice and Control During the Day and for Leisure Time***

- **26%** of the individuals interviewed reported that someone else chose what they do during the day.
- **51%** of individuals reported that when they chose their work or day activity they had an option to go where people without disabilities go.
- **46%** of individuals saw no other places when choosing what they do during the day.

***Source: 2017-18 IM4Q Report***

# Community Participation Support Services since July 2017 by PROMISE RA Year and Month

## % of Paid Service Units in Community Setting

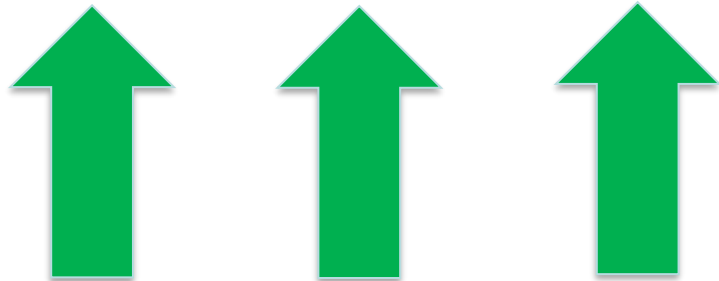


Remittance Advice (RA) Year and Month

01: <25%    02: 25%-49%    03: 50%-74%    04: 75%-99%    05: 100%    Overall

## Doing great! ...

- 166 of 646 service providers are at 50% and above in community participation
- Of those 166 service providers, 139 are at 100% community participation



## ... Need a little help, please

- 266 of 646 service providers have billed 10 percent or less in community participation
- Of those 266 service providers, 130 have billed at zero percent

- Train direct care provider staff, supervisors, and managers in Person Centered Thinking and Planning to assist people to identify new experiences, promote engagement in new activities, and make new connections that are important to them. **RETAIN**

- Establish the statewide practice of community participation that facilitates valued and active participation in a broad range of integrated activities that build on the person's interests, preferences, and strengths while reflecting the person's desires for employment, community involvement, and membership.

### REVISE TO:

- *Continue the* statewide practice of community participation that facilitates valued and active participation in a broad range of integrated activities that build on the person's interests, preferences, and strengths while reflecting the person's desires for employment, community involvement, and membership.



- Redesign day programs (adult day habilitation and prevocational services) to limit separation from the community, encourage employment and community participation, and to provide the support people need to be in their communities, from transportation to skill building. **REMOVE**

- Provide training to SCs and all stakeholders on facilitating and supporting individuals to become more involved in community life.

### **REVISE TO:**

- Develop and provide training to SCs on facilitating planning, discussions and effective monitoring to support individuals to become more involved in community life.

- Develop and disseminate new ideas and approaches on how to provide creative solutions to transportation barriers. **RETAIN**

- Analyze available data to identify providers that are meeting or exceeding goals for community participation to gather information on best practices, and provide training and technical assistance to facility-based CPS providers to change business practices to increasingly support people in community settings.



- Tom Flynn, Central Office CPS lead
  - [c-thoflynn@pa.gov](mailto:c-thoflynn@pa.gov)
  - 717-783-2376

**QUESTIONS????**